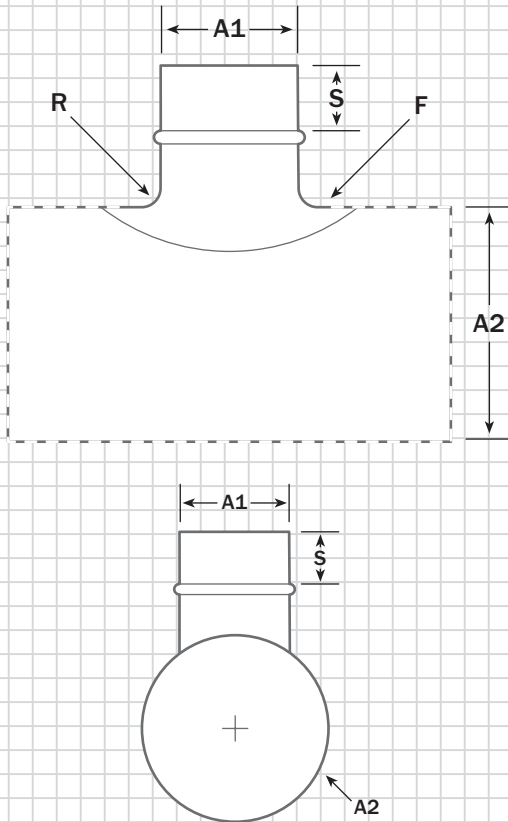


90° Die Stamped Saddle Tap (DSTB & DSTNB)



Key

A1 = Branch size **R** = Radius
A2 = Pipe size **F** = Flange on pipe

R = 0.787" (4 on 4 – 6 on 20/22/24)
R = 1.0" (8 on 8 – 12 on 22/24)
F = 1.0" (4 on 4 – 8 on 20/22/24)
F = 2.0" (10 on 10 – 12 on 22/24)
S = 1.875" (4 on 4 – 5 on 16/24)
S = 3.360" (6 on 6 – 12 on 22/24)

Materials Available

- Galvanized, 24 gauge

Options Available

- Damper collars in 6" lengths (see DSTDC6 spec)
- Bead or no bead

Dimensions

Size	(A1)	(A2)	Weight Each
4 on 4	3 15/16"	4"	0.4#
4 on 5	3 15/16"	5"	0.4#
4 on 6/7	3 15/16"	6"-7"	0.4#
4 on 8	3 15/16"	8"	0.4#
4 on 9/10	3 15/16"	9"-10"	0.4#
4 on 12/14	3 15/16"	12"-14"	0.4#
4 on 16/24	3 15/16"	16"-24"	0.4#
5 on 5	4 15/16"	5"	0.7#
5 on 6/7	4 15/16"	6"-7"	0.7#
5 on 8/9	4 15/16"	8"-9"	0.7#
5 on 10	4 15/16"	10"	0.7#
5 on 12/14	4 15/16"	12"-14"	0.7#
5 on 16/24	4 15/16"	16"-24"	0.7#
6 on 6	5 15/16"	6"	0.8#
6 on 8	5 15/16"	8"	0.8#
6 on 10/12	5 15/16"	10"-12"	0.7#
6 on 14/16/18	5 15/16"	14"-18"	0.7#
6 on 20/22/24	5 15/16"	20"-24"	0.6#
8 on 8	7 15/16"	8"	1.1#
8 on 10	7 15/16"	10"	1.3#
8 on 12/14	7 15/16"	12"-14"	1.1#
8 on 16/18	7 15/16"	16"-18"	1.1#
8 on 20/22/24	7 15/16"	20"-24"	1.0#
10 on 10	9 15/16"	10"	1.8#
10 on 12	9 15/16"	12"	2.0#
10 on 14/16	9 15/16"	14"-16"	1.8#
10 on 18/20	9 15/16"	18"-20"	1.8#
10 on 22/24	9 15/16"	22"-24"	1.7#
12 on 12	11 15/16"	12"	2.3#
12 on 14/16	11 15/16"	14"-16"	2.0#
12 on 18/20	11 15/16"	18"-20"	2.3#
12 on 22/24	11 15/16"	22"-24"	2.1#