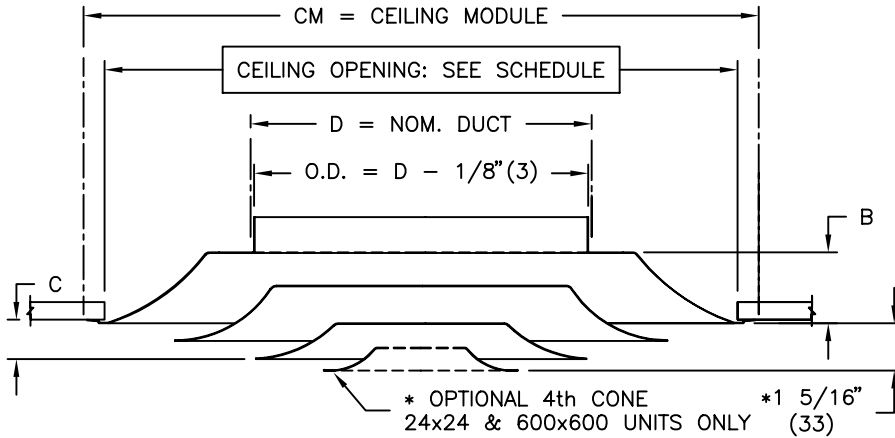


SCD, ASCD SQUARE CONE DIFFUSER



IMPERIAL UNITS (Inches)

	CM	CEILING OPENING	B	C	DUCT SIZE
<input type="checkbox"/>	24x24	22x22	2½	1⅛	6,8,10,12,14,15
<input type="checkbox"/>	20x20	18x18	2½	½	6,8,10
<input type="checkbox"/>	12x12	10½x10½	1⅛	1⅛	4,5,6,7,8

SI UNITS (mm)

	CM	CEILING OPENING	B	C	DUCT SIZE
<input type="checkbox"/>	600x600	549x549	64	27	152,203,254,305,356,381
<input type="checkbox"/>	500x500	449x449	64	13	152,203,254
<input type="checkbox"/>	300x300	249x249	29	27	102,127,152,178,203

MATERIAL:

- SCD - STEEL CONSTRUCTION
- ASCD - ALUMINUM CONSTRUCTION (STYLE 31 ONLY)

FINISH:

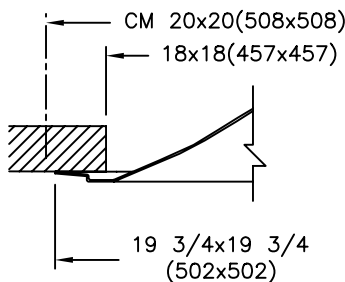
- B12 WHITE (OPTIONAL FINISHES AVAILABLE)

OPTION:

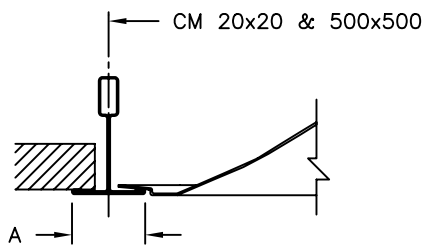
- INSULATED BACKPAN (SCD STYLE 31 T-BAR 24x24 & 600x600 ONLY) MATERIAL: ½" FIBERGLASS WITH FOIL/SCRIM VAPOR BARRIER

FRAMES: FOR CM 20x20 & 500x500 ONLY

31 SURFACE MOUNT

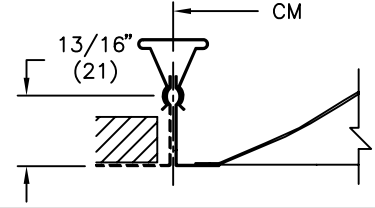


31 T-BAR A = 1" (25) or 9/16" (14)

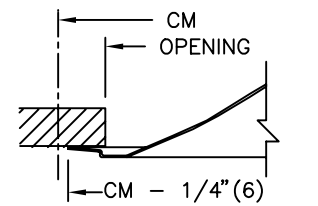


FRAMES: FOR CM 24x24 & 12x12 600x600 & 300x300

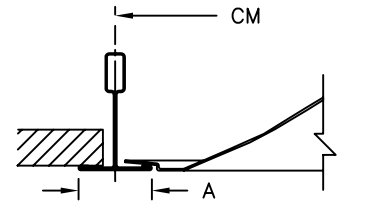
2 SNAP-IN



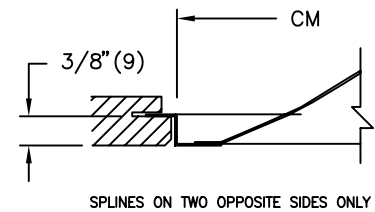
31 SURFACE MOUNT



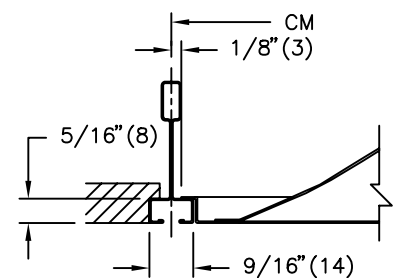
31 T-BAR A = 1" (25) or 9/16" (14)



4 SPLINE



17 NARROW MEMBER



ALL METRIC DIMENSIONS () ARE SOFT CONVERTED. IMPERIAL DIMENSIONS ARE CONVERTED TO METRIC AND ROUNDED TO THE NEAREST MILLIMETER.

PROJECT:

ENGINEER:

CUSTOMER:

SUBMITTAL DATE:

SPEC. SYMBOL:



KL
218772

SCD, ASCD
SQUARE CONE DIFFUSER

NOV 2001